

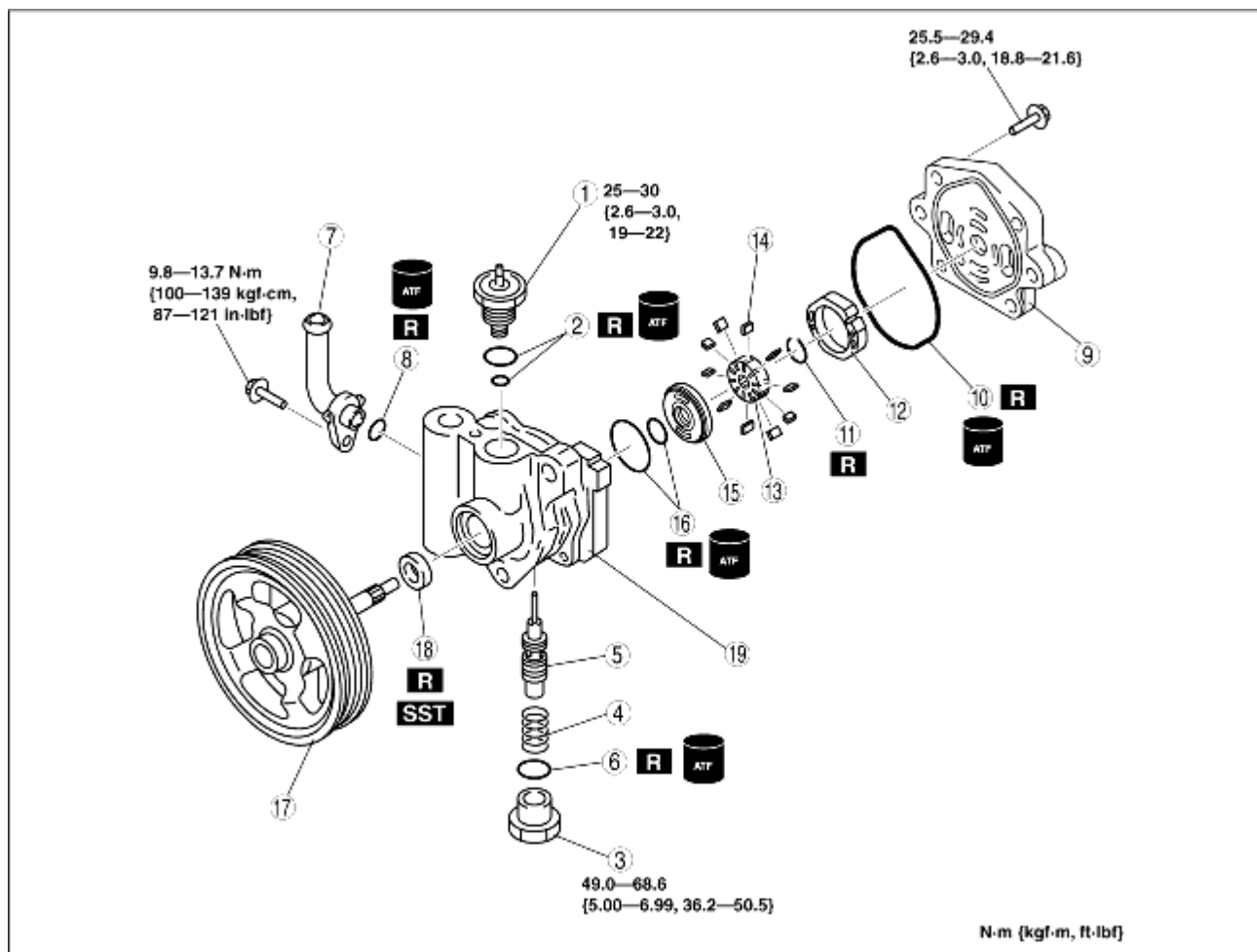
POWER STEERING OIL PUMP (ZJ, Z6) DISASSEMBLY/ASSEMBLY

B3E061432650W04

Note

- The following procedure is for replacement of the O-ring, oil seal and shaft component only. Replace the oil pump as a single unit if there is a malfunction in the oil pump body, cam ring, side plate, rotor, or other parts of the component.

- Disassemble in the order indicated in the table.
- Assemble in the reverse order of disassembly.



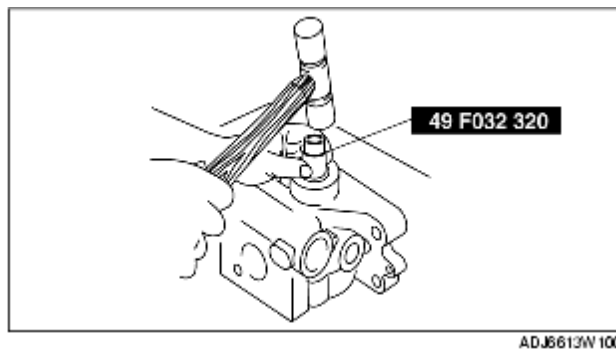
ADA6613W023

1	Pressure switch component
2	O-ring
3	Connector
4	Spring
5	Control valve

6	O-ring
7	Suction pipe
8	O-ring
9	Rear pump body (See Rear Pump Body Assembly Note)
10	Gasket
11	Clip
12	Cam ring (See Cam Ring Assembly Note)
13	Rotor
14	Vane
15	Side plate
16	O-ring
17	Shaft component
18	Oil seal (See Oil Seal Assembly Note)
19	Front pump body

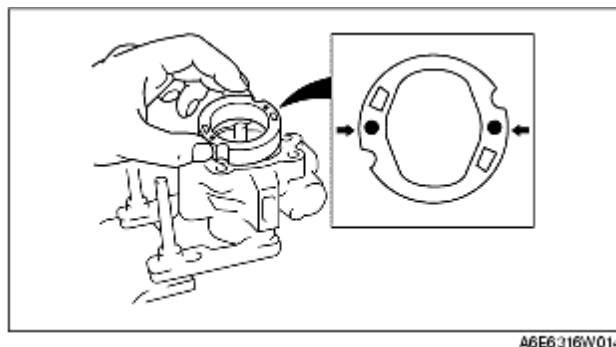
Oil Seal Assembly Note

1. Install a new oil seal in the front pump body using the **SST** and plastic hammer.



Cam Ring Assembly Note

1. Install the cam ring in the front pump body with the mark facing upward.



Rear Pump Body Assembly Note

1. After installing the rear pump body, manually turn the shaft component to verify that it rotates smoothly.